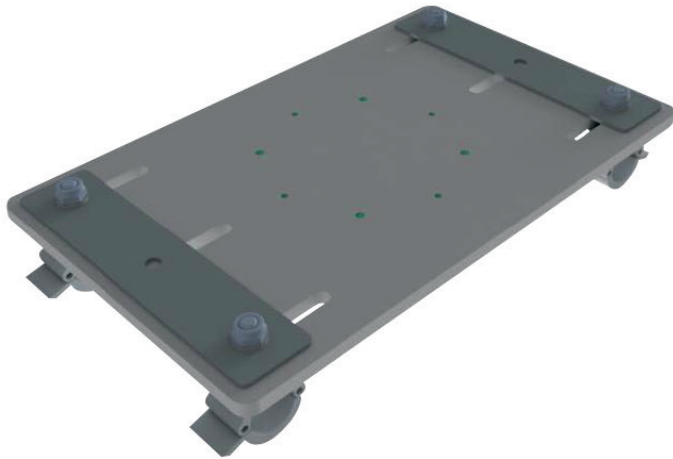


PF-UNI-PORAD, PF-UNI-PORAD-L

Datasheet



PORTRAIT ADAPTER

- ▶ lightweight and safe mounting solution for portrait installations
- ▶ DGUV V17 verified
- ▶ easily adaptable for different frame types
- ▶ compatible with the new EVO-LINK-200 series

With our Portrait Adapters PF-UNI-PORAD and PF-UNI-PORAD-L it's very simple to turn your projector from landscape into portrait orientation. Just mount PF-UNI-PORAD or PF-UNI-PORAD-L to your projector frame with the rigging clamps and use for example an EVO-LINK-200 to mount it onto a truss.

SPECIFICATIONS

Model number	PF-UNI-PORAD	PF-UNI-PORAD-L
Dimensions L x W x H [mm]	410 x 250 x 80	510 x 260 x 149
Weight [kg]	4.7	7
Weight load limit at M6 holes [kg]	60	
Weight load limit at M8 holes [kg]	150	150
Compatible projector frames	EVO Frame Series*	
	- FRAME-EVO-P10 - FRAME-EVO-P14 - FRAME-EVO-P20 - FRAME-EVO-E10	- FRAME-EVO-E20 (with modified clamps) - FRAME-EVO-P30 (with modified clamps) - FRAME-BOXER - FRAME-PTRZ31K - FRAME-PTRQ32K - FRAME-EBL25000
Frame installation possibilities	Portrait mode	
Compatible accessories	EVO-LINK-200 series*	

* also compatible with other frame models and accessories, please contact us for more information