

Important

Installation only by qualified technicians.

Always inspect this product prior to any installation and check for damages etc.

Always use all four 9 mm mounting holes.

Always use the correct fasteners: 4x M6x12 Screws DIN 7991

Only use with compatible displays.

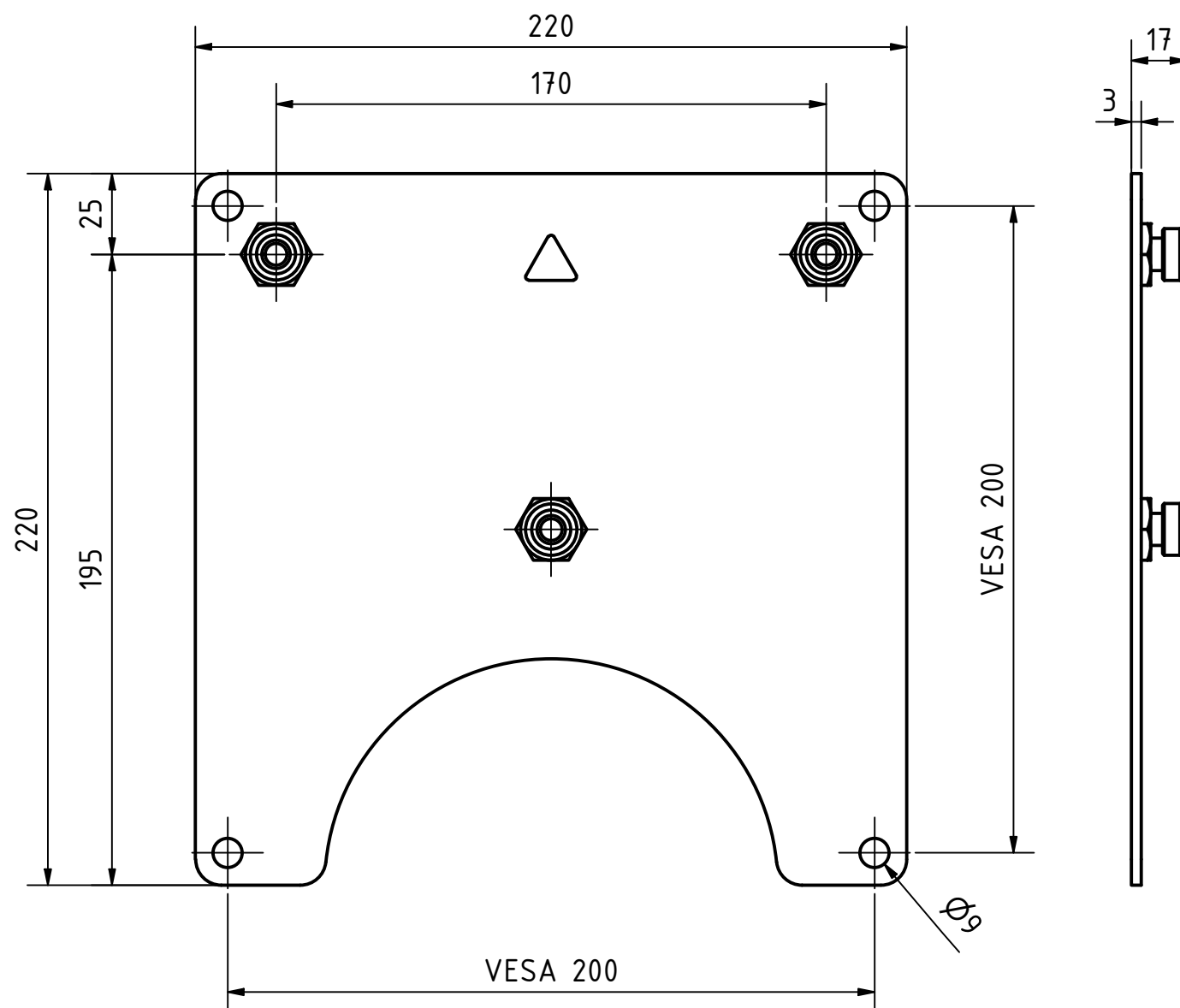
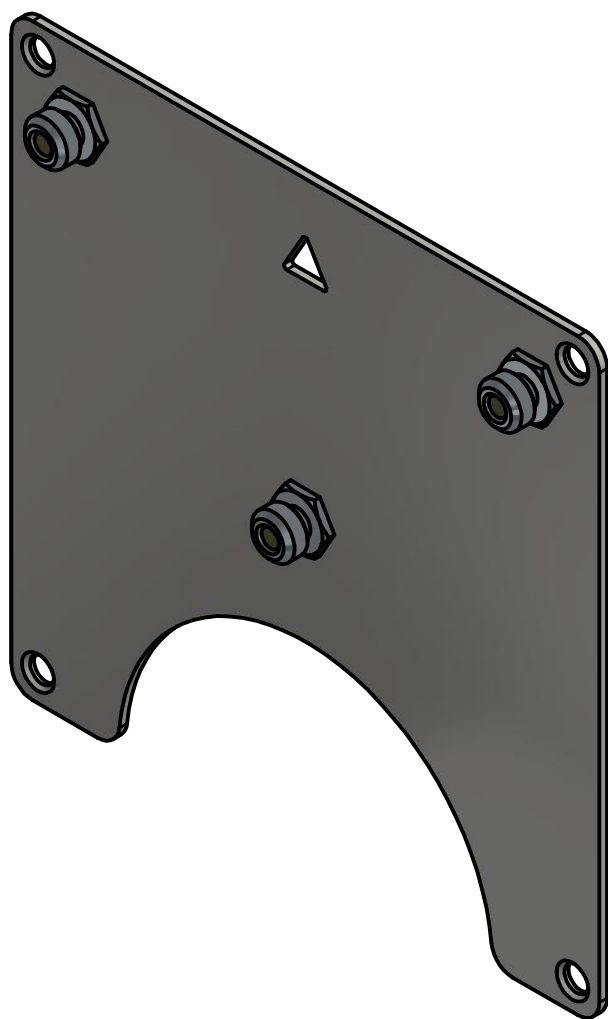
Make sure the structure carrying the overall weight is stable.

Only for indoor usage.

Only for vertical usage. (no tilting etc.)

Only use in the pictured orientation.

Do not exceed the maximum load weight of **60 kg**.



<div></div>				<div>© COPYRIGHT EXACT SOLUTIONS</div> <div>This print and the information shown thereon, is the property of EXACT SOLUTIONS. It may not be delivered to others nor reproduced for general circulation without the written consent of the EXACT SOLUTIONS.</div>			Material:		Revision: 00	
									Weight: 1,500 kg	
							Supplier:			
					Date	Name	Title: Adapter Plate for Displays VESA 200x200 to 3Pin			
				Author	14.04.2020	Frank Scholven				
				Checked						
				Approved						
							PartNr.: ABD-200			
							SCALE: 1 : 2			
							A3			
Status	Change log	Date	Name				Number of pages:		1/1	